

# User Instructions

Hästens Comfortable II









Sleeping in the best bed  
changes everything.

Welcome to the community  
of the well rested.

Hästens Comfortable II is natural, comfortable and multi-functional – like nothing else in your home. Your new bed offer functions for creative moments, inspiration and innovative thinking as well as deep sleep, recovery for body and soul, rest and relaxation. With your Hästens Comfortable II you have so much more than a bed. Enjoy decades of sleeping, comfort, innovation, dreaming, eating breakfast, or whatever you choose to do in bed. With your Hästens Comfortable II you can change the position of your bed as often as you like.

# Safety Instructions

Read the user guide carefully before using the bed for the first time. Hästens Sängar AB cannot be held responsible for any injuries caused by incorrect use.

Power requirements: 110-120 VAC/60 Hz, 220-240 VAC/50-60 Hz. Minimum fuse rating: 10 A (110-120 V/60Hz, 220-240 V/50 Hz). Incorrect use will invalidate the warranty.

Do not use the bed if the bed, motor or the power cord is damaged.

Contact your local Hästens reseller for repair.

Assembly and installation may only be done by authorized personnel.

Place the bed on an even, level surface.

Before using the bed, ensure that it can be raised and lowered freely so that nothing can become stuck or caught.

Ensure that the bed is in the flat position before sitting on it.

Always remove the plug when cleaning or moving the bed.

Never allow the bed, the power cord or the plug to come into contact with water or any other liquid.

Do not allow the power cord to become caught under the wheels or between the moving parts.

Never use sharp or pointed objects in the bed.

The use of headboards that are not fully covered is not recommended, due to the risk of catching.

The bed shall not be used:

- in any environment where combustible or explosive gases or vapors may be present
- in a moist environment
- outdoors
- in any application that will be cleaned with an automated washing system, or
- for raising and lowering loads in industrial or technical

applications or for any use within the household

The bed shall not be operated:

- by small children
- by frail or infirmed persons without supervision, or
- in the proximity of small children

You should only use spare parts which have been manufactured or approved by Hästens Sängar AB. Only these parts will guarantee a sufficient level of safety. Use of parts that are not approved by Hästens Sängar AB will void warranty.

The battery-operated reset function is not a safety system and does not avert danger.

Keep transportation rails in case of moving.

Duty cycle: after 2 minutes of continuous operation of the motor, the motor must rest for 20 minutes to prevent damage or overheating.

If legs with wheels are used the legs shall be in a locked position before the bed is used.

Do not use water when cleaning the bed.

It is extremely important that the bed is positioned on a level surface, and that nothing such as walls or furniture can interfere with movement of the bed.

Failure to attach the sync cable on wide chassis before operation may result in damage to the bed and/or motors.

Use the correct plug for your country.

Before lowering the head end make sure that nothing can get pinched between the frame and the footend.

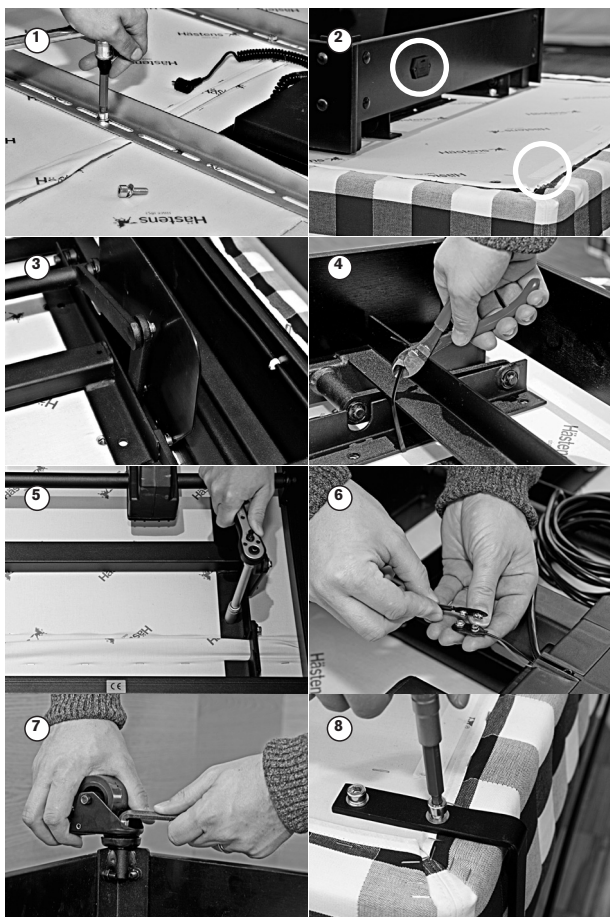
Do not adjust the bed without visual sight of the bed.

Do not adjust the bed during cleaning/dusting.

<b>SAFETY INSTRUCTIONS .....</b>	<b>4</b>
<b>INSTALLATION .....</b>	<b>6</b>
Assembly of single bed .....	6
Assembly of double bed .....	7
<b>OPERATION .....</b>	<b>8</b>
Use .....	8
Remote control .....	9
Important technical information .....	10
If the green button is pressed .....	10
Worth keeping in mind .....	10
Maintenance .....	11
Cleaning .....	11
Moving .....	11

# Assembly of single bed

Place the mattress on the floor with its packaging. Turn the sprung lower section upside down, on top of the mattress and its packaging.



1. Remove the bolts for the shipping strips. Remove the shipping strips.

2. Place the chassis on the sprung lower section. Ensure that the foot end of the chassis matches up with the foot end of the lower section, as shown.

3. Attach the anti-crush guards in the position indicated between the chassis and sprung lower section.

4. Remove the shipping guards at the foot and head ends.

5. Align the holes in the chassis with the holes in the lower section. Keep in mind that the base plates are a little loose and may have slightly shifted. Hand tighten all the bolts and then cross-tighten them, plate by plate.

6. Connect the battery cable connector that runs from the battery box, to the battery cable connector from the motor.

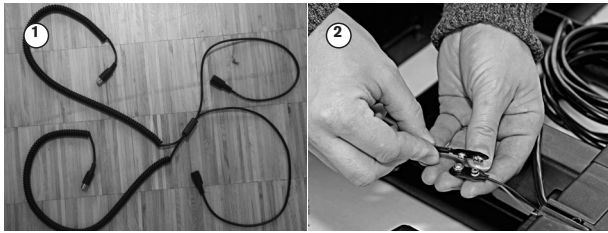
7. Attach the wheels using the supplied tool.

8. Attach the mattress catch using the bolts supplied. Fit the upholstery to the top of the mattress.

# Assembly of double bed

Two chassis can be connected together with a sync cable, to use as a double bed.

A maximum of two remote controls can be connected to the sync cable.



1. The two spiral ends of the sync cable connect to one in each motor. To the other ends of the sync cable, one or two remote controls can be connected.

2. Connect the battery cable from the battery box, to the battery cable connector on the motor on each chassis.

# Use

## **TO RAISE THE HEAD END**

Press and hold the HEAD END UP button until the head section reaches the desired position. Release the button.

## **TO LOWER THE HEAD END**

Press and hold the HEAD END DOWN button until the head section reaches the horizontal position or the desired intermediate position. Release the button

## **TO RAISE THE FOOT END**

Press and hold the FOOT END UP button until the head section reaches the desired position. Release the button.

## **TO LOWER THE FOOT END**

Press and hold the FOOT END DOWN button until the head section reaches the desired position. Release the button.

## **TO RAISE THE HEAD END AND THE FOOT END SIMULTANEOUSLY**

Press and hold the HEAD END & FOOT END UP button until the desired position is reached. Release the button.

## **TO LOWER THE HEAD END AND THE FOOT END SIMULTANEOUSLY**

Press and hold the HEAD END & FOOT END DOWN button until the desired position is reached. Release the button.

## **EMERGENCY LOWERING**

Press and hold the HEAD END & FOOT END DOWN button until the bed has reached the horizontal position. The bed is now lowered using the 9-volt batteries. Replace the batteries in the receiver after emergency lowering.



# Remote control

## DESCRIPTION OF THE FUNCTIONS



# Important technical information

The bed is fitted with a power-off function. This means that if the controls are not used for approximately 20 seconds, the power will be turned off at the plug. When this happens, a soft click will be heard from the plug. Plugs that have a green button are fitted with a relay. It turns off the power when no electronic functions are being used. When any button is pressed on the remote control, an infrared signal is sent to the bed it is connected to. A signal is then sent to the relay in the plug using the 9-volt battery attached to the motor. This reconnects power to the motor, which then carries out the function for the button pressed.

## If the green button is pressed

If the green button has been pressed, the system must be reset to ensure that every-thing has been correctly connected. Pressing the green button manually connects the power to the motor, an action that is supposed to be performed automatically by the 9 volt battery.

Do the following: Remove the plug from the wall outlet, and disconnect the 9 volt battery in the battery box. Press any optional button on the remote control and hold until the green light at top of the remote control goes out. Re-insert the plug into the socket and reconnect the 9 volt battery. Test the functions.

## Worth keeping in mind

It is extremely important that the bed is positioned on a level surface, and that nothing such as walls or furniture can interfere with movement of the bed.

# Maintenance

Periodic visual inspection for housing damage.	Check the housing of the motor for breaks or cracks.	At least every six months.
Periodic visual inspection of the plug connections and electrical access points for damage.	Check that all electrical cables and connections are firmly seated and correctly positioned.	At least every six months.
Periodic visual inspection for cable damage.	Check the connecting cables for pinching or shearing. Also check the strain relief and kink protections mechanisms, in particular after any mechanical load.	At least every six months.
Periodic functional test of the end switches.	Move the head- and foot end to the highest and lowest positions.	At least every six months.

# Cleaning

Clean the wooden frame with a moist cloth. Clean the motor and chassi with a dry cloth.

# Moving

Contact your local Hästens reseller in case of moving.



User instructions in multiple languages can be downloaded from [www.hastens.com/ownership](http://www.hastens.com/ownership)

Bruksanvisning på flera språk kan laddas ned från [www.hastens.com/ownership](http://www.hastens.com/ownership)

Brugervejledning på flere sprog kan downloades fra [www.hastens.com/ownership](http://www.hastens.com/ownership)

Bruksanvisning på flere språk kan lastes ned fra [www.hastens.com/ownership](http://www.hastens.com/ownership)

Käyttöohjeet eri kielillä ladattavissa osoitteesta [www.hastens.com/ownership](http://www.hastens.com/ownership)

Gebruiksaanwijzingen kunnen in verschillende talen gedownload worden op [www.hastens.com/ownership](http://www.hastens.com/ownership)

Gebrauchsanleitungen in mehreren Sprachen können von [www.hastens.com/ownership](http://www.hastens.com/ownership) heruntergeladen werden

Instrukcję obsługi w innych językach można pobrać z [www.hastens.com/ownership](http://www.hastens.com/ownership)

Instrucciones para el usuario en varios idiomas podrán ser descargadas desde [www.hastens.com/ownership](http://www.hastens.com/ownership)

As instruções de uso nas várias línguas podem ser vistas em [www.hastens.com/ownership](http://www.hastens.com/ownership)

Mode d'emploi en plusieurs langues peuvent être téléchargées ici: [www.hastens.com/ownership](http://www.hastens.com/ownership)

Istediğiniz dildeki kullanım talimatlarını [www.hastens.com/ownership](http://www.hastens.com/ownership) sayfasından yükleyebilirsiniz

Návod na pouitíe v rôznych jazykoch si môžete stiahnuť na [www.hastens.com/ownership](http://www.hastens.com/ownership)

Инструкцию по эксплуатации на нескольких языках можно загрузить с сайта [www.hastens.com/ownership](http://www.hastens.com/ownership)

Μπορείτε να κατεβάσετε τις οδηγίες χρήσης σε πολλές γλώσσες από την ιστοσελίδα [www.hastens.com/ownership](http://www.hastens.com/ownership)

A használati útmutató letölthető a [www.hastens.com/ownership](http://www.hastens.com/ownership) oldalról